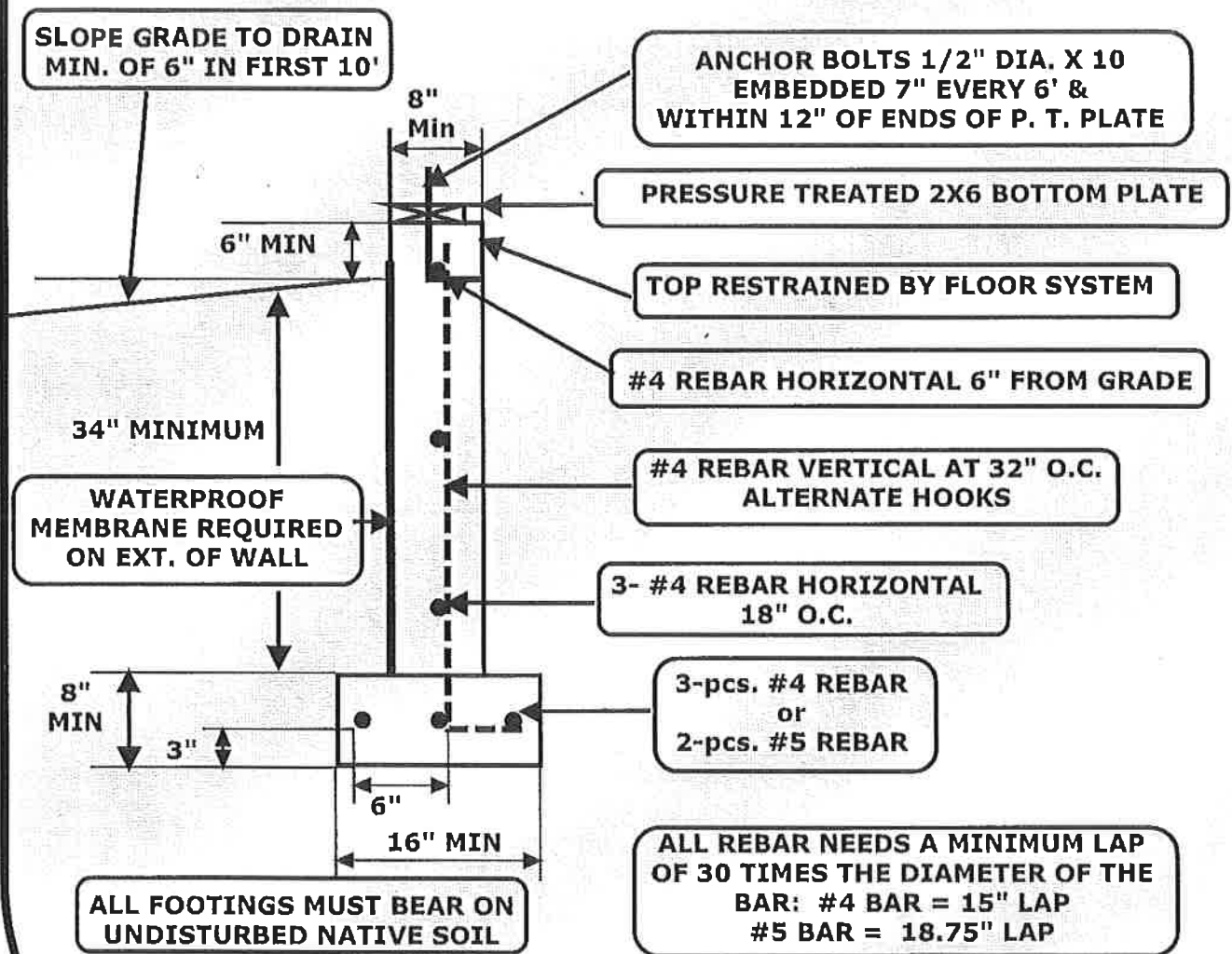
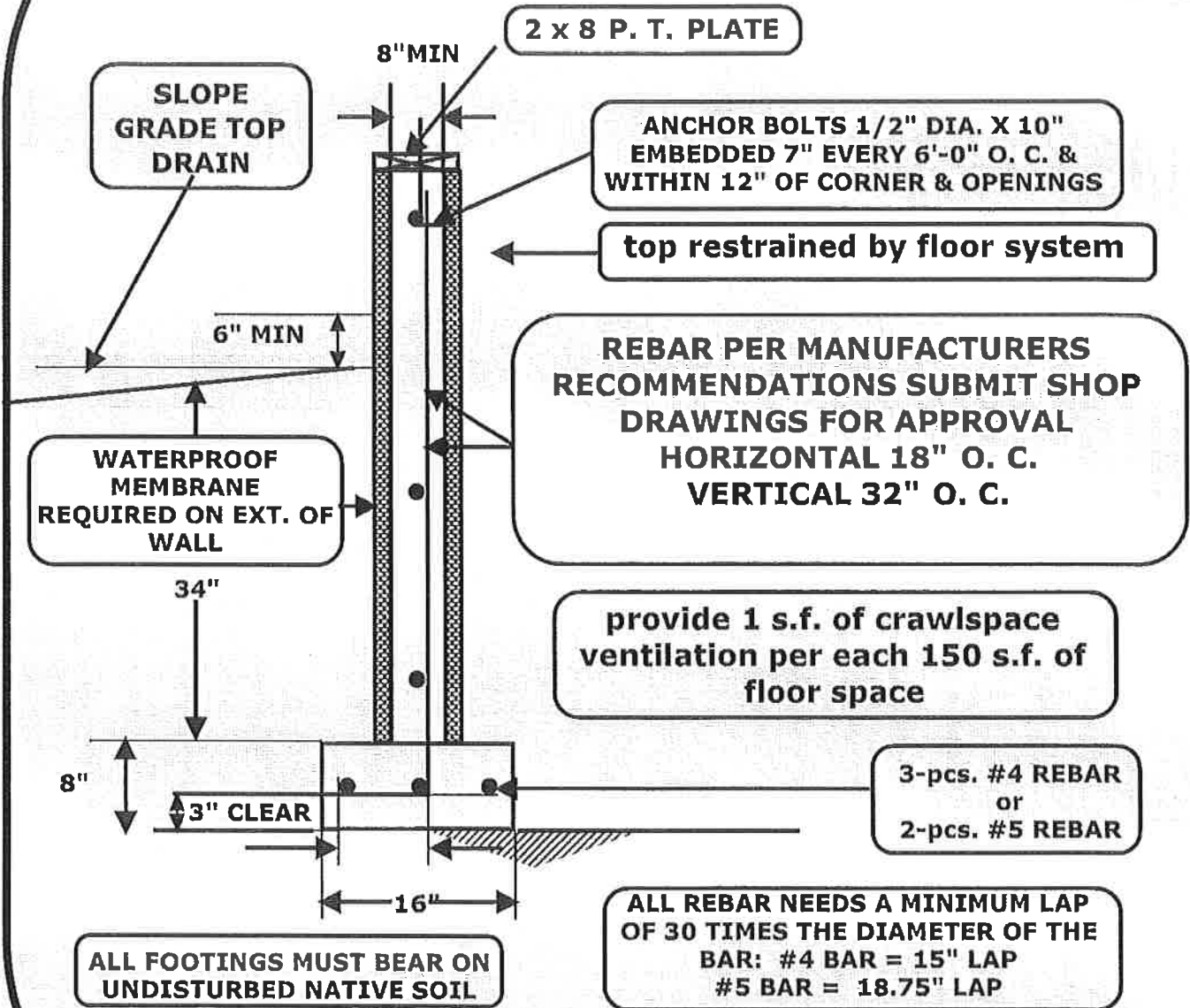


TYPICAL STEMWALL TYPE FOUNDATION



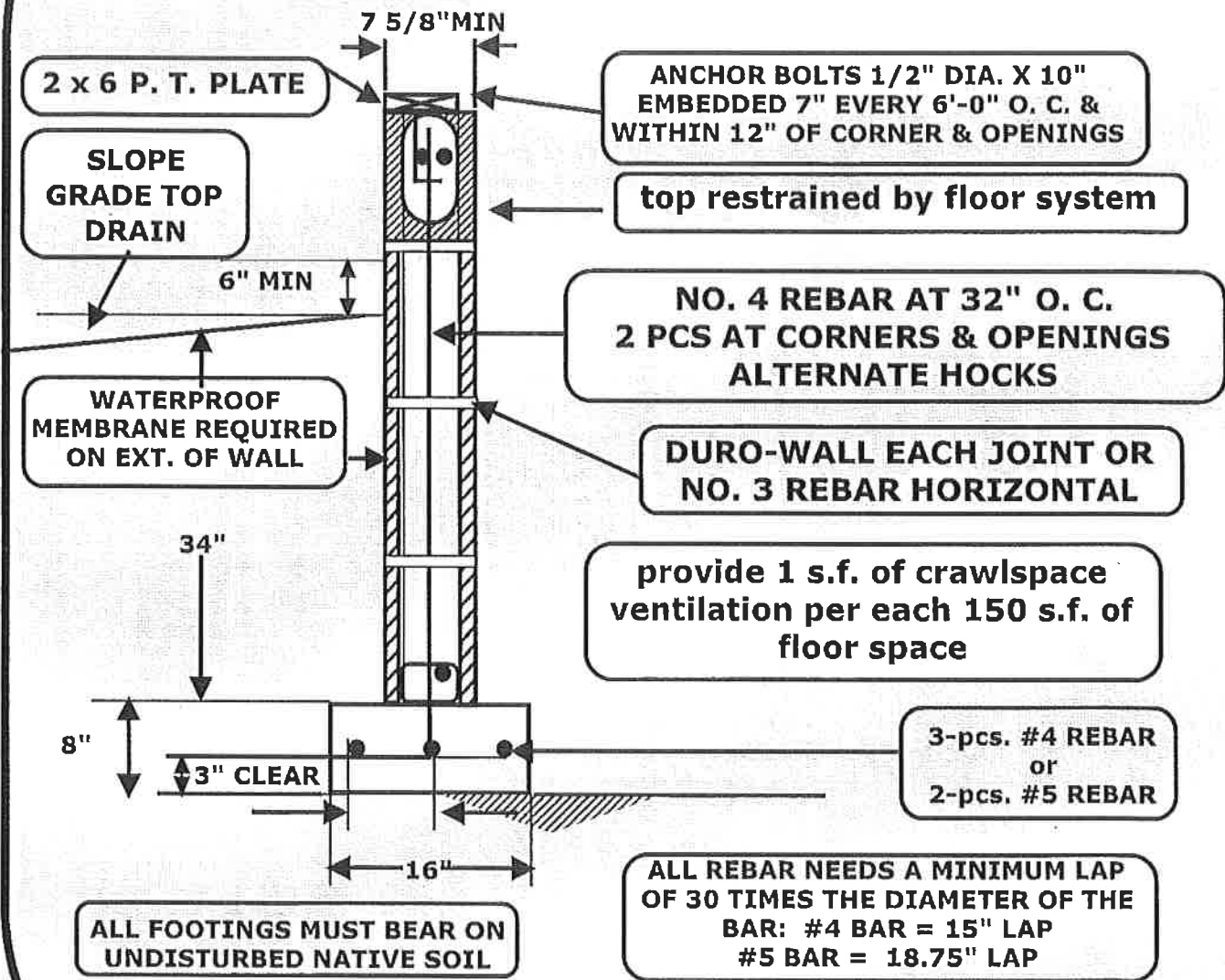
NOTE: THESE ARE MINIMUM STANDARDS FOR INSTALLING FOUNDATIONS FOR RESIDENTIAL PROJECTS. COMMERCIAL AND "SPECIAL" RESIDENTIAL PROJECTS WILL REQUIRE ENGINEERED FOUNDATIONS.

TYPICAL "FOAM" FORMED FOUNDATION



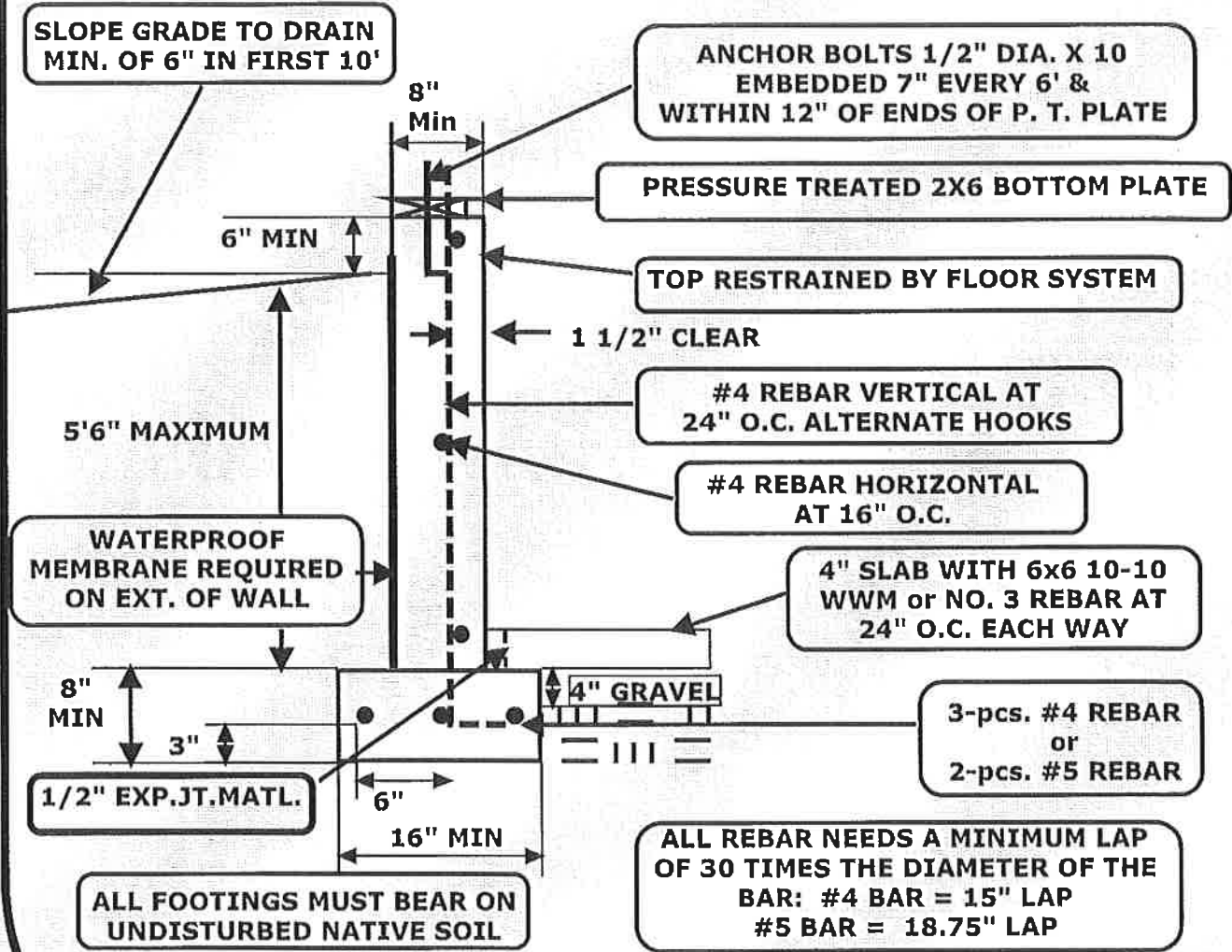
NOTE: THESE ARE MINIMUM STANDARDS FOR INSTALLING FOUNDATIONS FOR RESIDENTIAL PROJECTS. COMMERCIAL AND "SPECIAL" RESIDENTIAL PROJECTS WILL REQUIRE ENGINEERED FOUNDATIONS.

TYPICAL CMU TYPE FOUNDATION
CMU GROUTED ALL CELL FULL HEIGHT 3/8" AGGREGATE CONCRETE
WALL OVER 48" TALL REQUIRE ENGINEERING



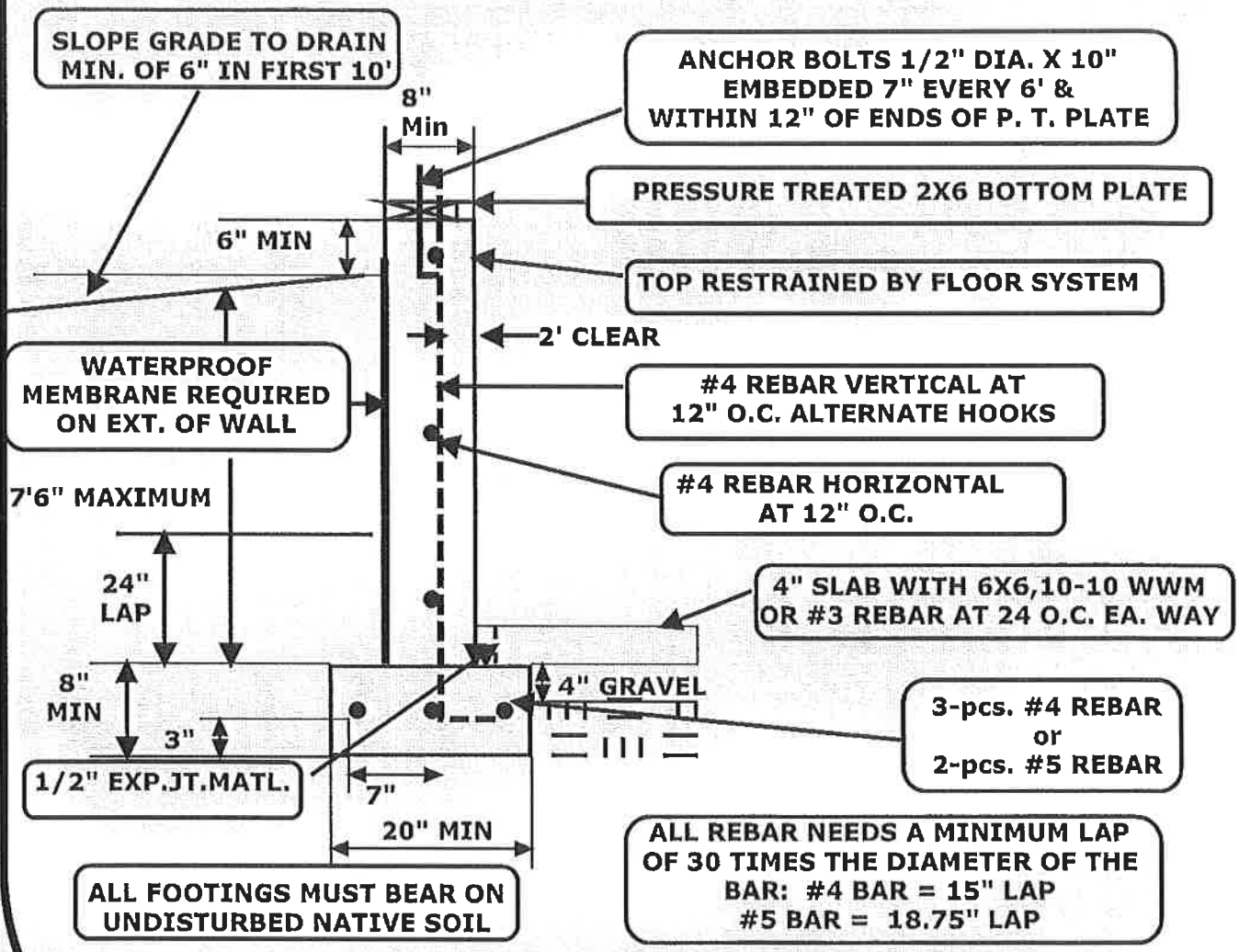
NOTE: THESE ARE MINIMUM STANDARDS FOR INSTALLING FOUNDATIONS FOR RESIDENTIAL PROJECTS. COMMERCIAL AND "SPECIAL" RESIDENTIAL PROJECTS WILL REQUIRE ENGINEERED FOUNDATIONS.

BASEMENT WALL UP TO 6'0" HIGH



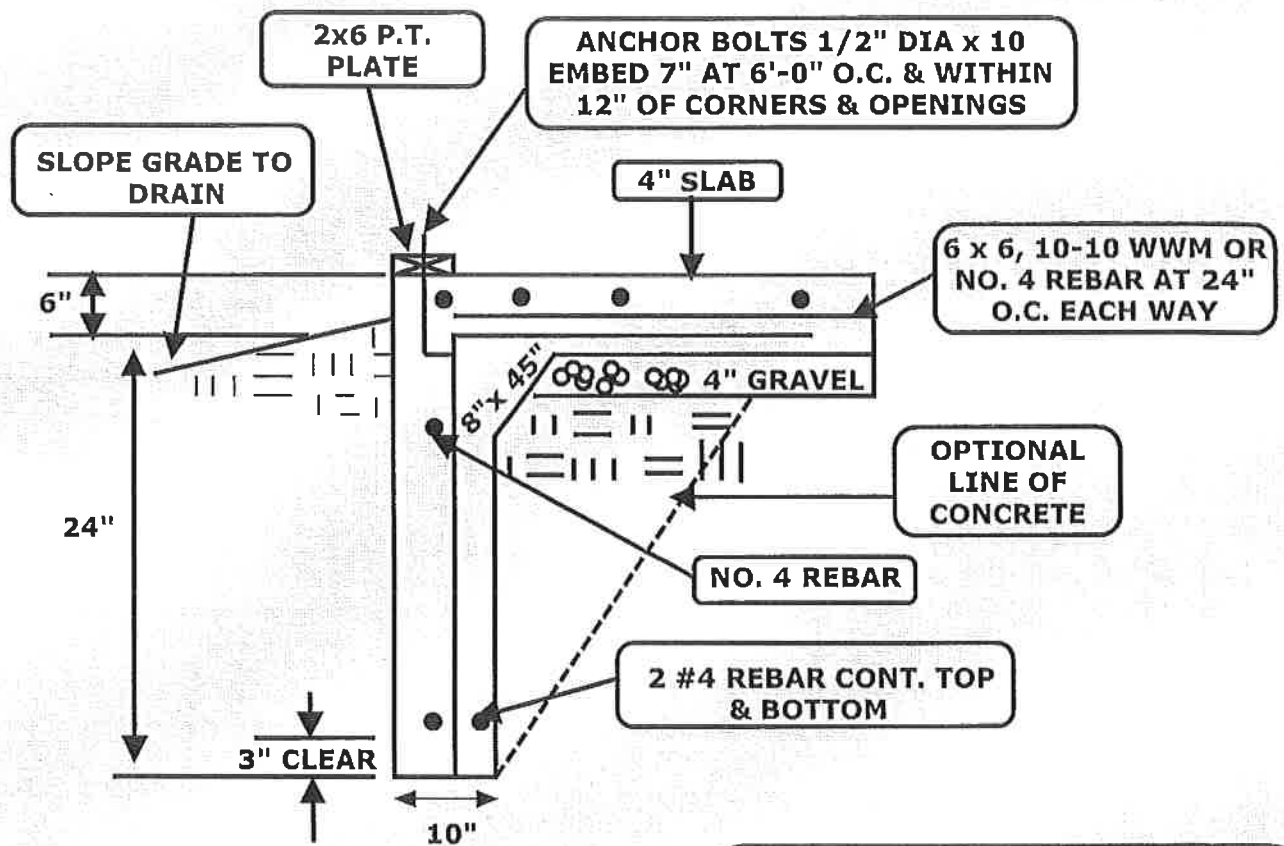
NOTE: THESE ARE MINIMUM STANDARDS FOR INSTALLING FOUNDATIONS FOR RESIDENTIAL PROJECTS. COMMERCIAL AND "SPECIAL" RESIDENTIAL PROJECTS WILL REQUIRE ENGINEERED FOUNDATIONS.

**BASEMENT WALL OVER 6'0" UP TO 8'0" HIGH
WALL OVER 8'0" REQUIRE ENGINEERING**



NOTE: THESE ARE MINIMUM STANDARDS FOR INSTALLING FOUNDATIONS FOR RESIDENTIAL PROJECTS. COMMERCIAL AND "SPECIAL" RESIDENTIAL PROJECTS WILL REQUIRE ENGINEERED FOUNDATIONS.

TYPICAL MONOLITHIC FOUNDATION

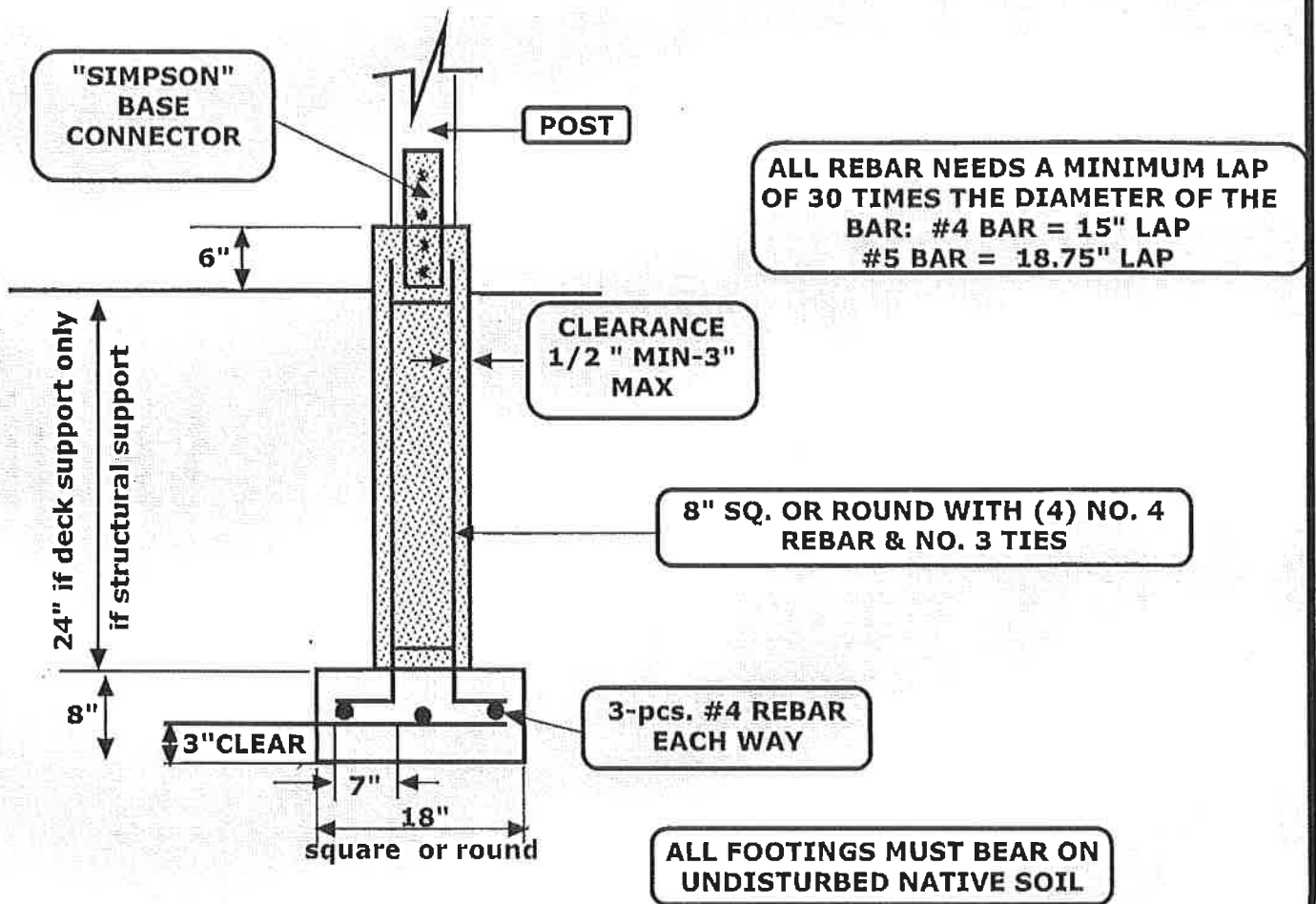


ALL FOOTINGS MUST BEAR ON UNDISTURBED NATIVE SOIL

**ALL REBAR NEEDS A MINIMUM LAP OF 30 TIMES THE DIAMETER OF THE BAR: #4 BAR = 15" LAP
#5 BAR = 18.75" LAP**

NOTE: THESE ARE MINIMUM STANDARDS FOR INSTALLING FOUNDATIONS FOR RESIDENTIAL PROJECTS. COMMERCIAL AND "SPECIAL" RESIDENTIAL PROJECTS WILL REQUIRE ENGINEERED FOUNDATIONS.

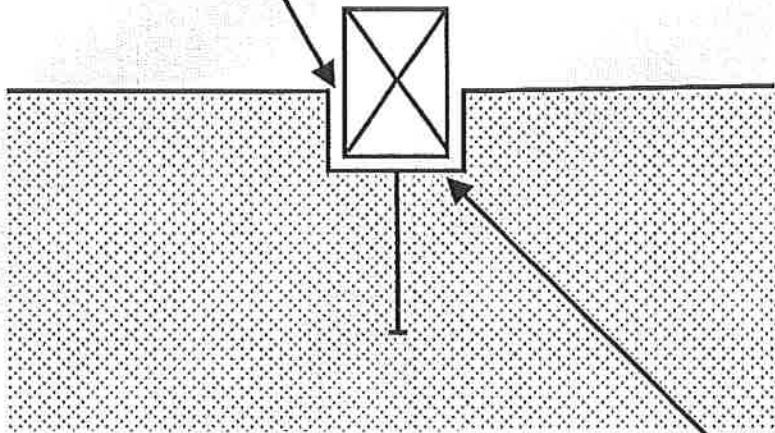
TYPICAL EXTERIOR COLUMN FOOTING



NOTE: THESE ARE MINIMUM STANDARDS FOR INSTALLING FOUNDATIONS FOR RESIDENTIAL PROJECTS. COMMERCIAL AND "SPECIAL" RESIDENTIAL PROJECTS WILL REQUIRE ENGINEERED FOUNDATIONS.

TYPICAL BEAM IN CONCRETE POCKET

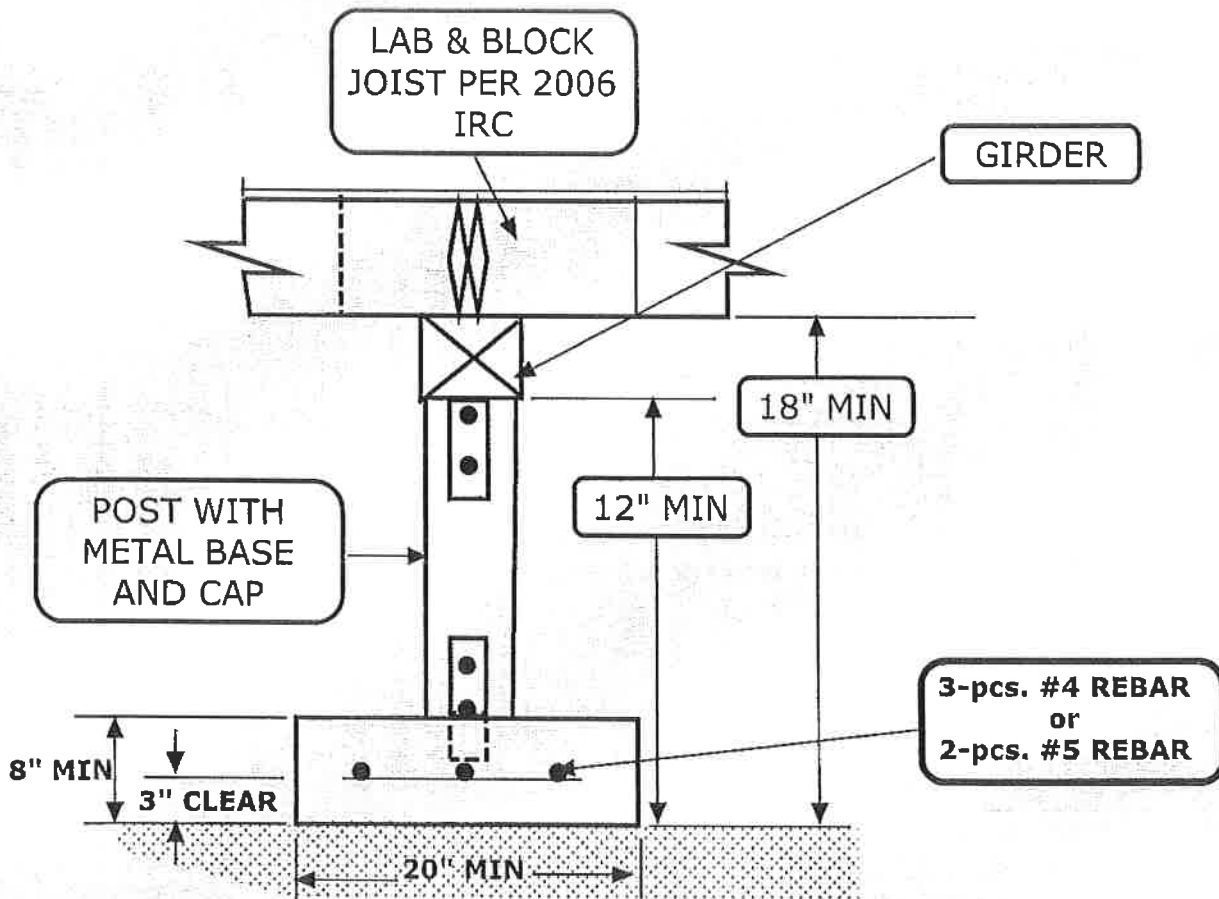
1/2" AIR SPACE
AT SIDES OF
BEAM AND END
OF BEAM



BEARING SEAT
"SIMPSON" GLB
CONNECTOR OR EQUAL
OR TREATED PLATE

NOTE: THESE ARE MINIMUM STANDARDS FOR INSTALLING FOUNDATIONS FOR RESIDENTIAL PROJECTS. COMMERCIAL AND "SPECIAL" RESIDENTIAL PROJECTS WILL REQUIRE ENGINEERED FOUNDATIONS.

TYPICAL FLOOR SUPPORT GIRDER



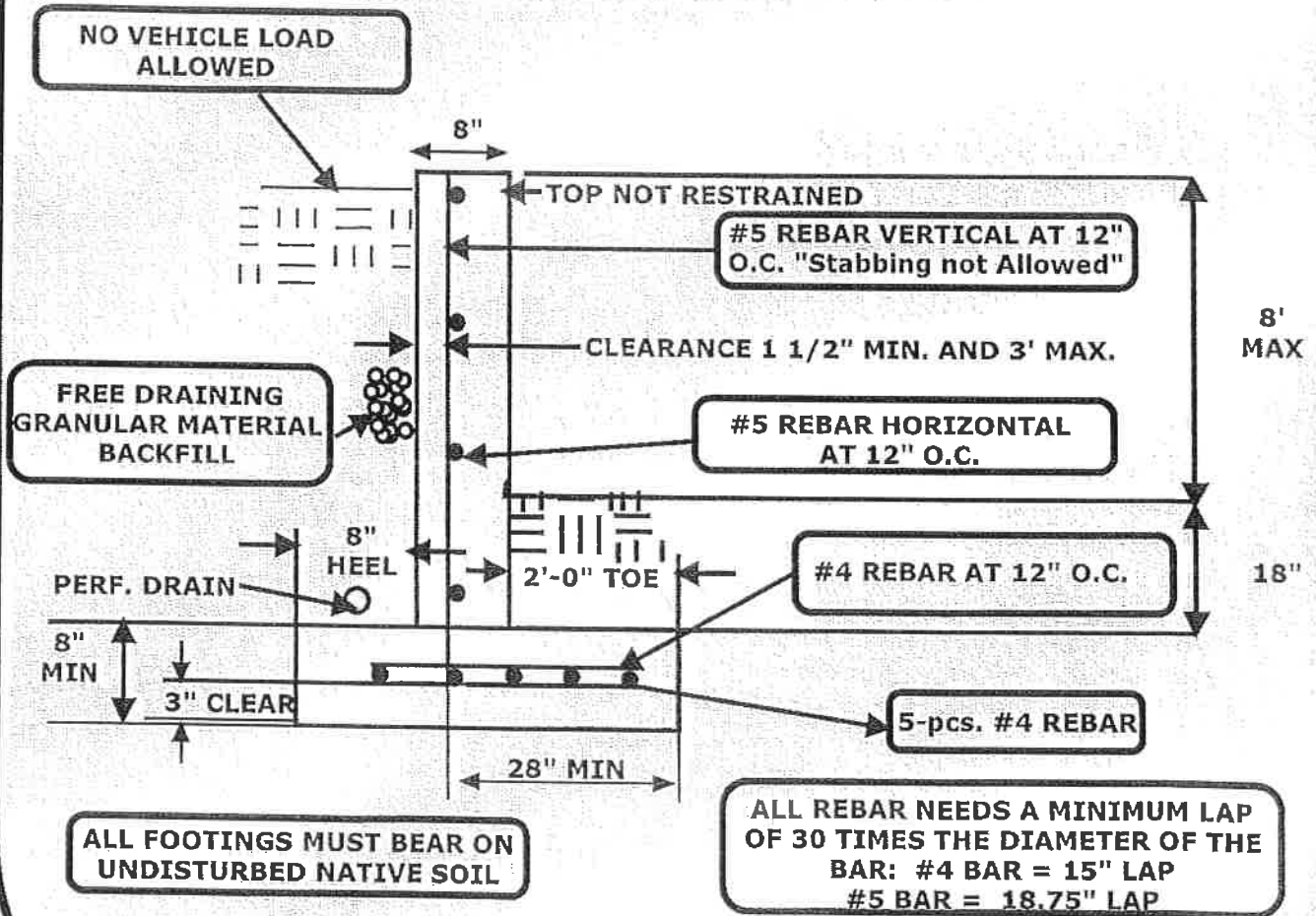
ALL FOOTINGS MUST BEAR ON UNDISTURBED NATIVE SOIL

**ALL REBAR NEEDS A MINIMUM LAP OF 30 TIMES THE DIAMETER OF THE BAR: #4 BAR = 15" LAP
#5 BAR = 18.75" LAP**

NOTE: THESE ARE MINIMUM STANDARDS FOR INSTALLING FOUNDATIONS FOR RESIDENTIAL PROJECTS. COMMERCIAL AND "SPECIAL" RESIDENTIAL PROJECTS WILL REQUIRE ENGINEERED FOUNDATIONS.

TYPICAL RETAINING WALL OVER TO 5'-0" HIGH UP TO 8'-0" HIGH

WALLS OVER 8'-0" HIGH REQUIRE ENGINEERING
WALLS OVER 20 FT. LONG WILL REQUIRE CONTROL JOINTS
WALLS OVER 50 FT. LONG WILL REQUIRE EXPANSION JOINTS



NOTE: THESE ARE MINIMUM STANDARDS FOR INSTALLING FOUNDATIONS FOR RESIDENTIAL PROJECTS. COMMERCIAL AND "SPECIAL" RESIDENTIAL PROJECTS WILL REQUIRE ENGINEERED FOUNDATIONS.