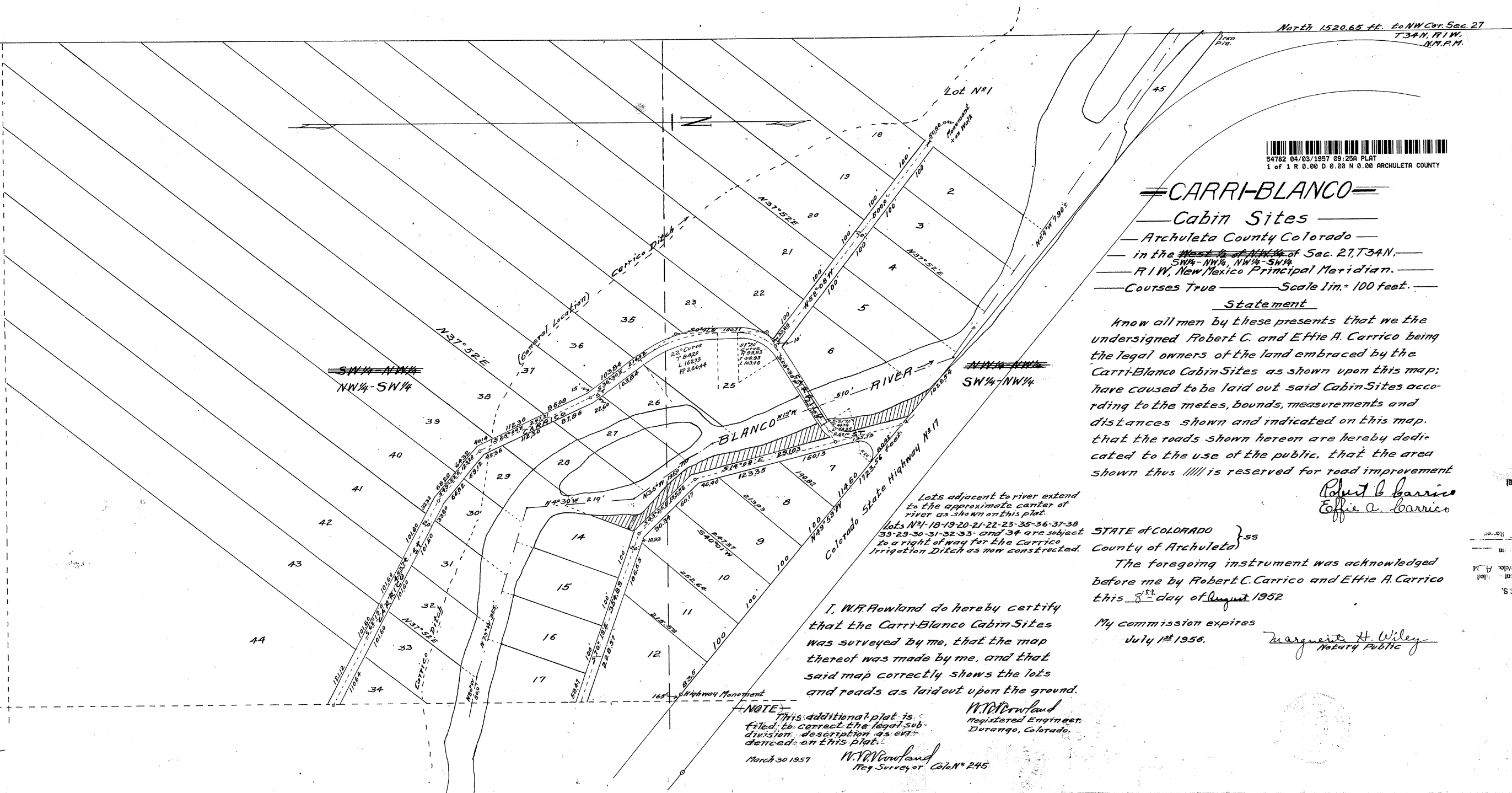


HA

4



North 1520.65 ft. to NW Cor. Sec. 27
 T34N, R1W,
 N.M.P.M.

54762 04/03/1957 08:25A PLAT
 1 of 1 R 0.00 D 0.00 N 0.00 ARCHULETA COUNTY

CARRI-BLANCO
 Cabin Sites
 Archuleta County Colorado
 in the West 1/4 of NE 1/4 of Sec. 27, T34N,
 SW 1/4 - NW 1/4, NW 1/4 - SW 1/4
 R1W, New Mexico Principal Meridian.
 Courses True Scale 1 in. = 100 feet.

Statement
 Know all men by these presents that we the undersigned Robert C. and Effie A. Carrico being the legal owners of the land embraced by the Carri-Blanco Cabin Sites as shown upon this map; have caused to be laid out said Cabin Sites according to the mekes, bounds, measurements and distances shown and indicated on this map, that the roads shown hereon are hereby dedicated to the use of the public, that the area shown thus //// is reserved for road improvement

Robert C. Carrico
Effie A. Carrico

STATE of COLORADO } ss
 County of Archuleta }

The foregoing instrument was acknowledged before me by Robert C. Carrico and Effie A. Carrico this 8th day of August 1952

My commission expires July 1st 1956. *Marguerite H. Wiley*
 Notary Public

I, W.R. Rowland do hereby certify that the Carri-Blanco Cabin Sites was surveyed by me, that the map thereof was made by me, and that said map correctly shows the lots and roads as laid out upon the ground.

W.R. Rowland
 Registered Engineer,
 Durango, Colorado.
 NOTE: This additional plat is filed to correct the legal subdivision description as evidenced on this plat.
 March 30 1957 *W.R. Rowland*
 Reg Surveyor CalN° 245

Recorder's Note: original
 Cert's certification is
 on the back of this
 document.

STATE OF COLORADO
 ARCHULETA COUNTY
 I hereby certify that this instrument was recorded in my office at Durango, Colorado, on the 8th day of August 1952 and is duly recorded in Plat File under record No. 54762.